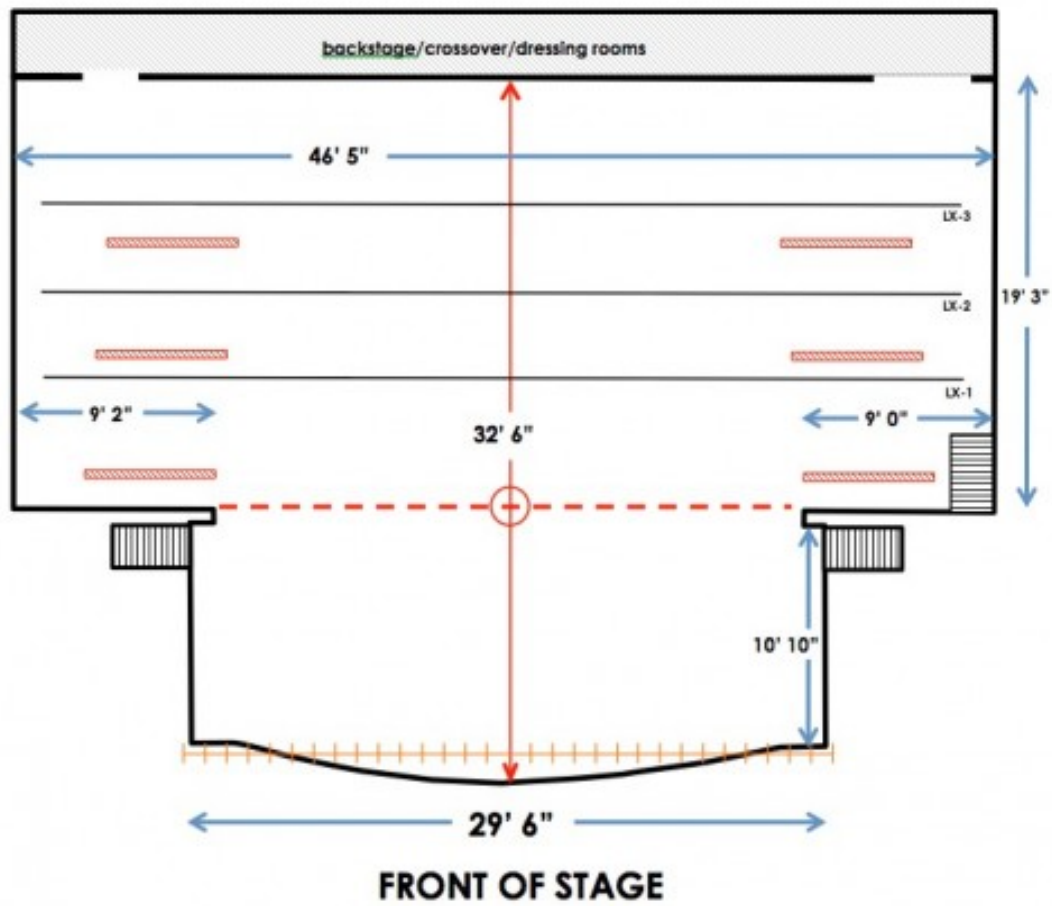
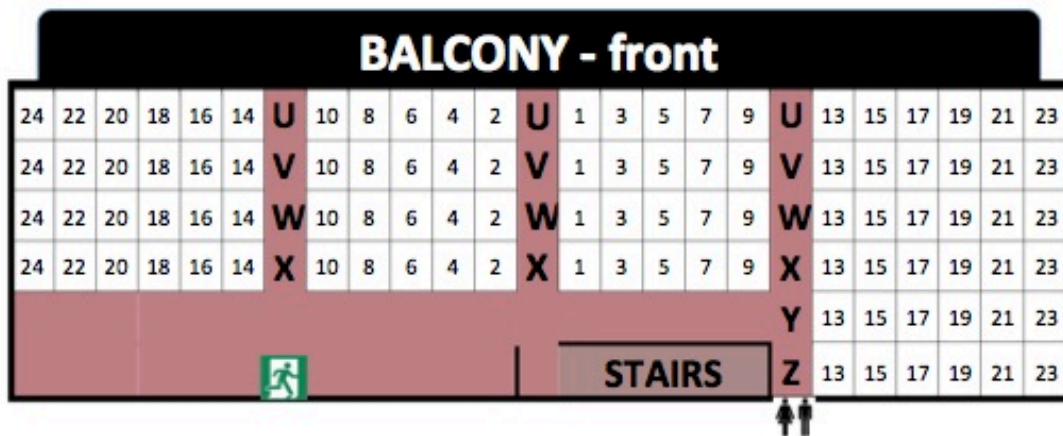
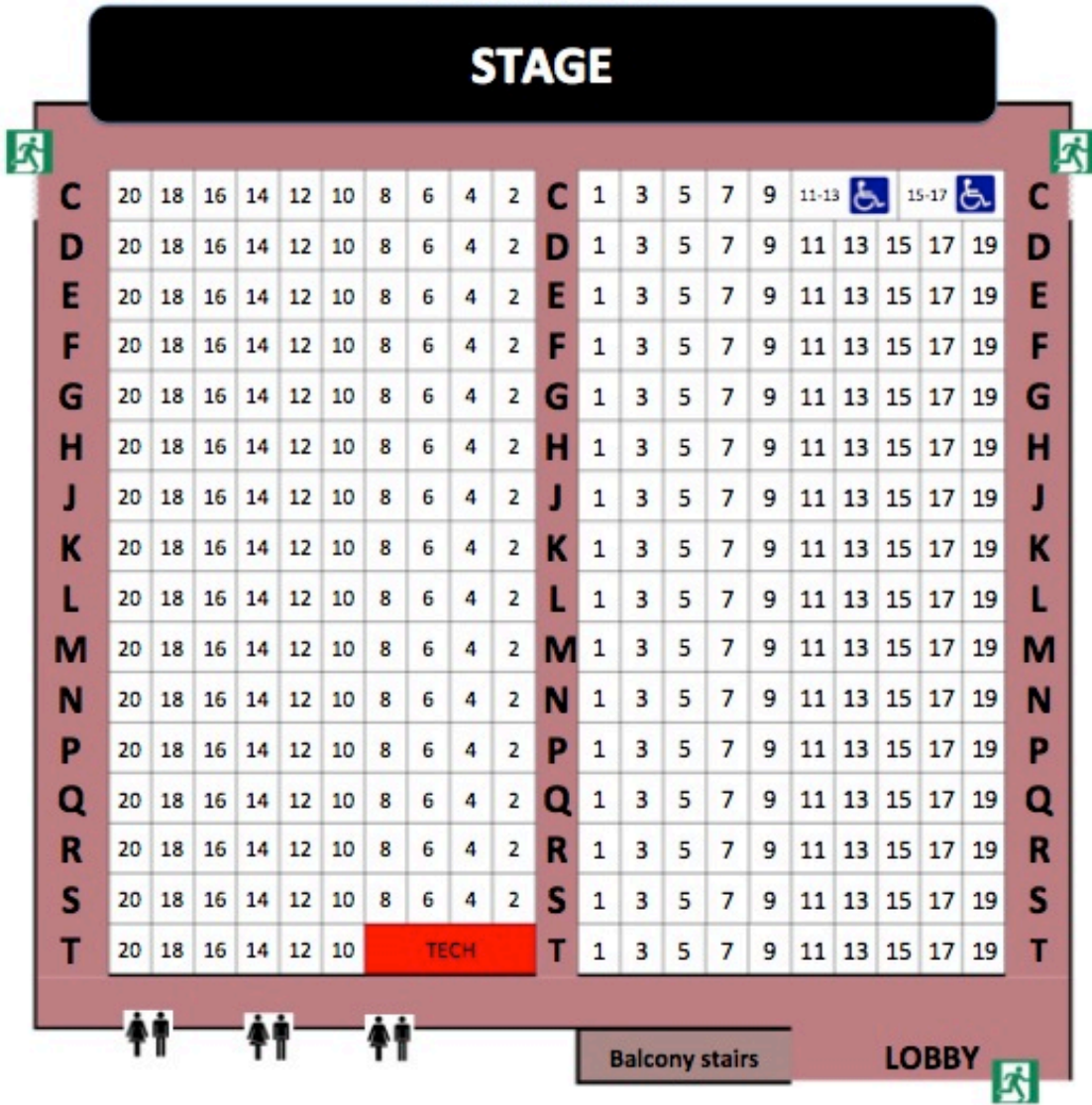


Technical Specs of the stage, seating, and lighting

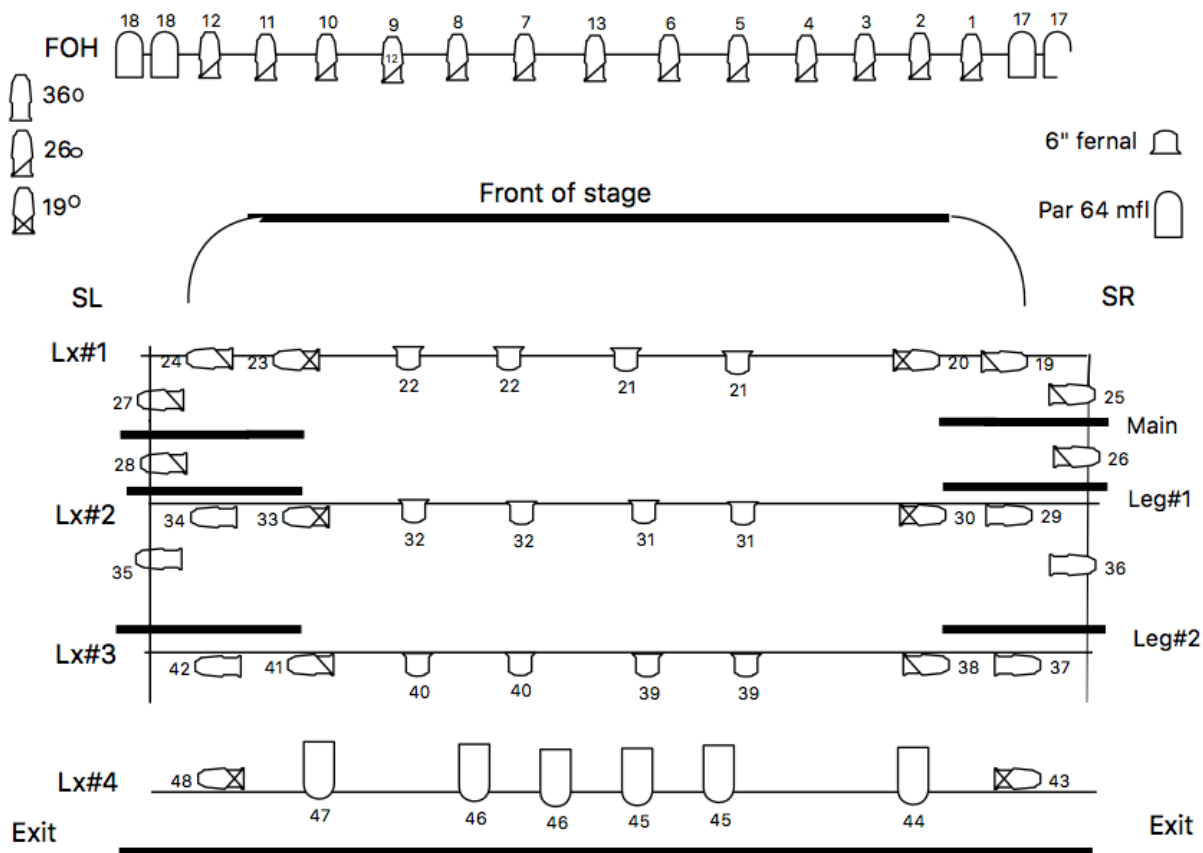
STAGE



## SEATING



## LIGHTING



## NOTES

### Dressing Rooms

Stage level: 1 large and 1 small dressing room \* Each dressing room has mirrors, make-up counters, costume rack, toilet, sink and shower.  
 \* Lower level has a Green Room, suitable for use as an additional dressing room. It also contains a full kitchen, toilet and sink, though no shower.

### Loading Dock

There is a loading area located behind the theatre on Stannus Street. The double doors are approximately 3ft. off the ground, with a ramp straight on to the MIPAC stage. This lot is also available for vehicle parking. Loading in and out can also be done through the stage left fire exit, which opens on to the house floor in front of the stage.

**Draperies**

Main curtain: 2 panels - black synthetic velvet, hand operated  
3 pair black legs - black synthetic velvet

**Lighting/Electrical**

MIPAC has a front-of-house catwalk and side-pipes for lighting placement, as well as pipes for several rows of lights onstage. No fly system. Catwalk accessible through attic hatch. We do not have a full inventory of lighting instruments - a wide variety of lighting is available through our technical director. MIPAC has a fully-dimmable, programmable lighting board.

**Sound**

24-channel analog or digital audio mixer. A full complement of microphones, monitors, and speakers can be brought in as needed. A back-line of amplifiers and instruments is also available. MIPAC does not have orchestral equipment (folding chairs, music stands, etc.) MIPAC does not have regular access to a piano, either upright or grand.